

# ISC | PUBLIC HEALTH SUPPORT SERVICES

## Comprehensive Public Health Support Services

The COVID-19 pandemic showed the risk that infectious disease and public health outbreaks pose not only on our communities, but our regions, states, county, and the entire world. The reality is that our world's growing population, coupled with more people moving to large urban areas, has elevated the role of public health in protecting and improving community health through the promotion of healthy lifestyles, research for disease and injury prevention, and control of infectious diseases.

The increasing importance of public health agencies has resulted in an increase in federal regulations and guidance, and an increasing expectation for both local and state Public Health departments to comply with these requirements. The COVID-19 pandemic further reinforced the importance of enhancing the preparedness and resiliency of our hospital and healthcare systems and infrastructure.

## Our Approach to Healthcare Preparedness & Disaster Resiliency

At Integrated Solutions Consulting (ISC), we encourage healthcare organizations to develop Comprehensive Emergency Preparedness and Response Programs that are not only compliant with the federal and state preparedness program standards, but also efficient, effective, and sustainable. This is accomplished by augmenting the expertise of our clients with ISC's healthcare preparedness specialists to deliver client-focused, value-added results that elevate the standards of excellence and innovation.

## ABOUT US

Integrated Solutions Consulting is a professional services firm focused on developing and implementing comprehensive crisis and consequence management solutions. We are a team of innovative problem-solvers that combine experience and evidence-based knowledge to deliver practical, best practice results across multiple industries to make communities safer and more resilient.



## BUILDING A COMPREHENSIVE & SUSTAINABLE EMERGENCY PREPAREDNESS & RESPONSE PROGRAM

- ✓ CMS Emergency Preparedness Rule -Hospital & EMS
- ✓ ASPR 2017-2022 HPP Capabilities -Healthcare Coalition(s)
- ✓ CDC PHEP Capabilities -Public Health
- ✓ FEMA National Response Framework -ESF 8
- ✓ National Disaster Recovery Framework -RSF Health & Social Security

## ISC's EXPERTISE AND SERVICES

ISC has been providing comprehensive public health support services for almost two decades. Our commitment and dedication to Public Health has resulted in a long history of preparing for, responding to, mitigating for, and recovering from public health outbreaks and pandemics. We have been honored to support public health agencies on a wide variety of projects and support the response to our nation's most significant infectious disease outbreaks, mass casualty events, and pandemics.

Top Supplier  
Performance Rating  
**dun & bradstreet**  
**97.1%**  
Successful  
Performance



Metropolitan Area  
Clients Served

### A SAMPLE OF OUR PUBLIC HEALTH ENGAGEMENTS

Public Health Program Coordination Support Services

Public Health Response Operations  
-Incident Command Support

Mass Casualty/Mass Care Planning

CMS Compliance Monitoring

ASPR Program Support

Medical Countermeasures Distribution & Dispensing Strategies

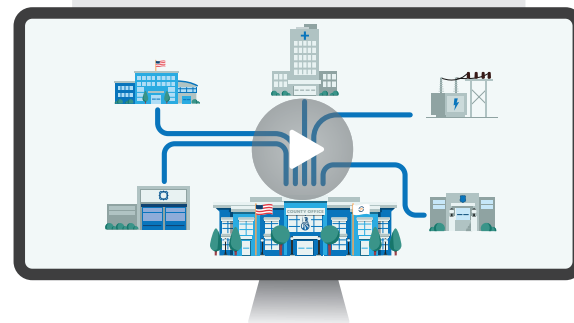
Healthcare Coalition Coordination & Support Services

COVID-19 Adaptive Recovery Strategic Plan

After Action Review & Improvement Plan

Healthcare Cost Reimbursement Support Services

Watch How We Are  
Elevating Public Health  
Preparedness!



Contact **ISC** today to learn more.



[Inquiry@i-s-consulting.com](mailto:Inquiry@i-s-consulting.com)  
847.737.5395